






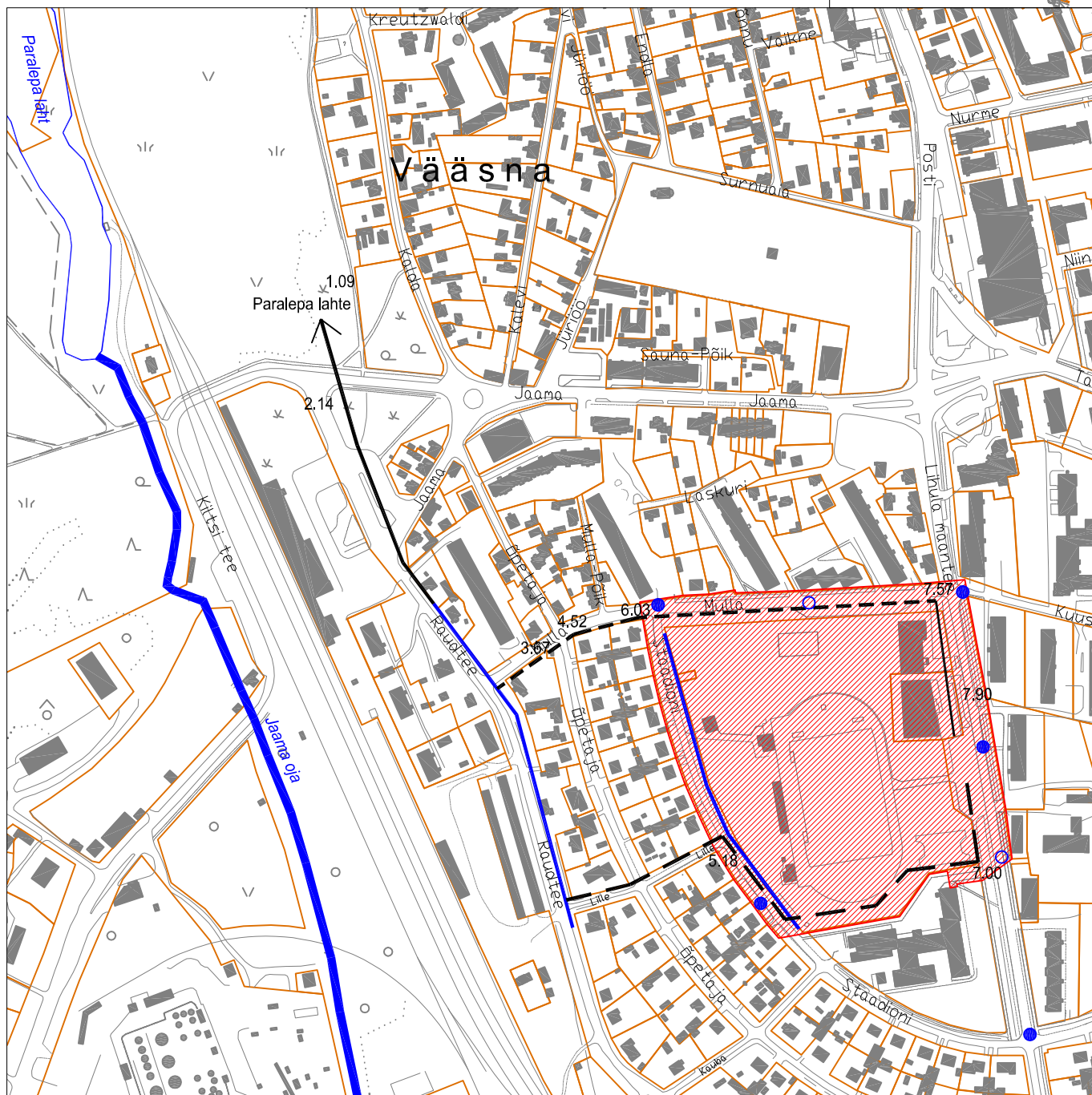
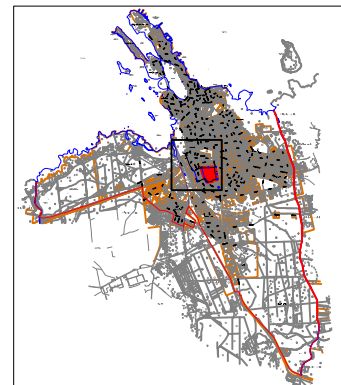


-  PLANEERINGUALA
-  KRAAV
-  OJA
-  OLEMASOLEV SAJUVETE KANALISATSIOON
-  VAREMPROJEKTEERITUD SAJUVETE KANALISATSIOON
-  ETTEPANEK SAJUVETE ÄRAJUHTIMISSÜSTEEMI RAJAMISEKS
- 1.09 MAAPINNA KÕRGUS
-  OLEMASOLEV / PLANEERITAV TULETÕRJEHÜDRANT



Joonis 1 M 1:5000

## ASEND JA SEOSD ÜMBRUSEGA

Haapsalu linnas Lihula mnt 10 krundi detailplaneering



OÜ Disarek, Keila 2008, töö nr 06-0705  
 Koostas: arhitekt S.Hunt  
 Kinnitas: tegevdirktor S.Hunt  
 Kuupäev: 11.01.2008