

HAAPSALU IN NUMBERS



HAAPSALU
A.D.1279

Data from 1 January 2008



General Info

Haapsalu was given town by laws 1279
Territory 10.6 km²

Length of town border 25 km

Sea border 14 km

Distance from south-east to
north-west 7.1 km

From south-west to north-east 4.6 km

Geographical coordinates of the town centre:

23° 32'30" and 58° 56'23"

Streets 120

Total length of streets 54 km

Length of the sewerage net 50.2 km

Length of the water pipes 46.4 km

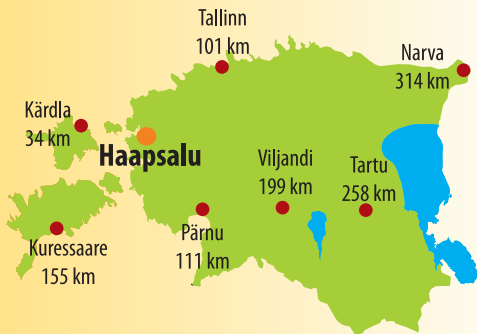
Number of people provided
with drinking water 96.3 %

Provided with sewerage 89.2 %

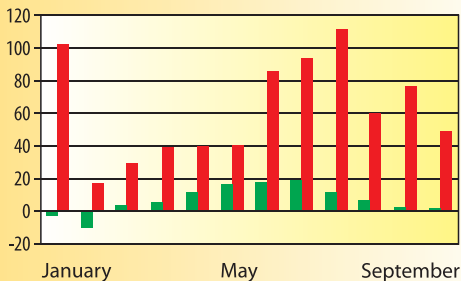
Internet

WiFi zones 28

Distance from the biggest towns of Estonia



In 2007 Air temperature and precipitation in Haapsalus



■ average month temperature (mm)

■ precipitation in total per month (°C)



History

- **1228** the Archbishop of Riga founded the bishopric of West Estonia and Islands, 1263 Haapsalu was chosen as a centre of the bishopric, where the Dome church and the castle was built.
- **1279** town bylaws was confirmed by the bishop and Haapsalu became the centre of the Lääne-Saare Bishopric for the next 3 centuries
- **1628** Haapsalu County was bought by Count Jacob De la Gardi.
- **1775** building of the Town Hall was completed
- **1783** Haapsalu became a county town.
- **1825** small mud spa, initiated by Dr. Hunnius, was built on the shore of the bay
- **1905** railway line was opened from Tallinn to Haapsalu
- **1937** Red Cross recreation centre was opened
- **1975** new culture centre was completed
- **1980ies** new recreation complex was founded where most visitors were patients from the Soviet Union
- **1994** S/c Haapsalu Kuurort was established. It provided rehabilitation, catering with accommodation and beauty services
- **1997** health and recreation centre Fra Mare was opened
- **1998** Haapsalu College, a branch of Tallinn University, opened its doors in Haapsalu
- **2008** 120-year-anniversary of Haapsalu Yacht Club

Symbols



The Coat-of-Arms of Haapsalu

The Coat-of-Arms of Haapsalu depicts an eagle, which is the symbol of John the Evangelist –the patron saint of Lääne-Saare Bishopric. The silvery eagle, surrounded by nimbus, is still on the coat-of-arms of Lääne County. During the centuries the silhouette of the eagle on the coat-of-arms of Haapsalu has turned black and the symbol of a free town - the castle- has been added to it. It is believed that it is not an abstract tower as it was usual at that time, but it is really the castle of Haapsalu.

The flag of Haapsalu

The flag of Haapsalu dates back to the 1930ies. It consists of two parts, the first part (1/3) has three equal parts, blue-white-blue, and the second part (2/3) has three equal parts in the different order of colours: white-blue-white. The flag is permanently hoisted in front of the Town Government.



The logo of Haapsalu

The logo of Haapsalu was created in 2004 by the advertising agency Zavood and it represents the window of the Gothic style with a silhouette of the White Lady. The logo was created to enhance communication in town, in the republic and internationally.



HAAPSALU
A.D.1279

Twin cities and partnership towns of Haapsalu

Rendsburg	Saksamaa	1989
Hanko	Soome	1992
Haninge	Rootsi	1998
Loviisa	Soome	2000
Greve in Chianti	Itaalia	2002
Uman	Ukraina	2003
Eskilstuna	Rootsi	2005
Fundao	Portugal	is applying

Distance of twin cities from Haapsalu (km)

Loviisa	193
Haninge	226
Hanko	229
Eskilstuna	321
Uman	1603
Rendsburg	1612
Greve in Chianti	2584
Fundao	3793

Membership of Haapsalu

Association of Estonian Towns	1990
Non-profit Society of Läänemaa Tourism, former NPS Association Haapsalu Tourism	1992
former NPS Association Haapsalu Tourism	1994
UBC, i.e., Association of West Sea Towns	
Association of Local Authorities of Läänemaa	1994
NPS of Estonian Healthy Towns	2002

Foundation of Vocational Studies of West-Estonia	2003
The Association of Castles and Museums around the Baltic Sea	2005
Foundation of the Administrative Centre for Tourism and Sport Facilities of North Läänemaa	2005

Population

Changes in numbers according to register

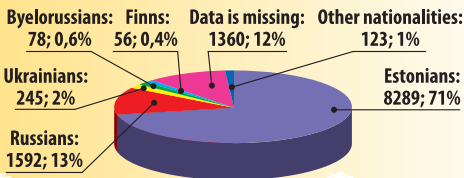
1.01.2004	12 341
1.01.2005	12 137
1.01.2006	12 027
1.01.2007	11 834
1.01.2008	11 780

Population growth in 2007

Rate of birth 113, rate of death 149, growth -36

Year	Birth	Death	growth
2002	111	168	-57
2003	106	156	-50
2004	75	138	-63
2005	107	158	-51
2006	106	151	-45
2007	113	149	-36

Population according to nationality:



Division by sex and age

Age	Men	Women	Total
0-4	251	206	457
5-9	258	245	503
10-14	304	316	620
15-19	436	373	809
20-24	441	480	921
25-29	386	368	754
30-34	364	376	740
35-39	387	383	770
40-44	344	437	781
45-49	349	485	834
50-54	357	475	832
55-59	357	458	815
60-64	270	392	662
65-69	227	413	640
70-74	191	412	603
75-79	162	319	481
80-84	104	267	371
85-89	24	107	131
90-94	6	36	42
95-99	1	13	14

Medical care

Out-patient specialised medical care

Foundation Läänemaa Haigla **specialities 20**
Foundation HNRK **rehabilitation**

In-patient specialised medical care

Hospitals	2
Foundation Läänemaa Haigla	
General hospital with bed space	98
Foundation HNRK Rehab bed space	102
Dental care institutions	7
Chemist's shops	9
Emergency aid brigades	2

Health resort rehabilitation

Spa Hotel Laine, accommodation for	173
Thalasso Spa Fra Mare, accommodation for	223

Health care personnel in 2007

	Full-time	Part-time
Doctors	46	32
Dentists	13	2
Nurses	125	2

Social Security

Pensions

Old-age and national/basic pensioners	2647
Survivor's pensions	186
Pensions for incapacity for work	455
Total	3288

Children benefits

Number of families	1507
Therein:	
with one child	913
two children	473
three or more children	121
School allowance	1519
Single parent child allowance	224
Birth grant	110

Social benefits for the people with disabilities

Benefits for disabled child	44
Benefits for disabled adults	606

Social benefits

Benefits	Number of benefits	
	2006	2007
Subsistence	1362	966
Guardianship	1811	1968
Birth grant	110	113
School and kindergarten allowance	153	120
Allowance for school beginners	87	96
Other one-time social benefits	172	479

Social services

Housing services	Number of space	Number of people	
		2006	2007
Social flats	18	26	29
Shelters	10 bed places	19	28
Hospices	25 bed places	92	68

Counselling	Number of people	
	2006	2007
Psychological child and adolescence counselling	1465	1134
Psychological adult counselling	58	339
Juridical counselling of the first level	149	108
Loan counselling	12	15
First-level psychological counselling of adults	387	373

Home and maintenance services	The number of people who were serviced	
	2006	2007
Home maintenance	72	79
Maintenance in nursing homes	24	25
Daily support services	16	14
Maintenance and day care in the nursery home for disabled children	5	5

Other types of services	The number of people who were serviced	
	2006	2007
Invalid transport	195	164
Personal assistance	5	2
Catering:		
at home	78	52
Soup Kitchen	100	55

Education 2007/2008

Pre-school institutions

Institutions	5
Children	544

General education

	schools	students
Primary schools	1	259
Gymnasiums	4	1459
Schools for children with special needs	1	127
Total	6	1828

Higher educational establishments

1	234
---	-----

Number of pupils by study stages

School years	Study stages			Total
	Forms 1.-6.	Forms 7.-9.	Forms 10.-12.	
2003/2004	910	683	647	2240
2004/2005	814	669	676	2159
2005/2006	768	611	620	1999
2006/2007	715	546	603	1864
2007/2008	663	523	515	1701

Positions of teachers in general education

Schools	Year				
	2003	2004	2005	2006	2007
Haapsalu Gymnasium	63,55	69,61	66,31	70,1	66,5
Haapsalu Co-educational Gymnasium	21,48	20,22	19,06	17,1	15,6
Haapsalu Wiedemann's Gymnasium	35,32	36,19	33,03	35,2	36,3
Haapsalu Primary School	15,99	16	16,32	15,9	18,5
Haapsalu Gymnasium for Adult Learners	8,7	9,31	7,36	5,52	4,75

Positions of kindergarten teachers

Kindergarten	Year				
	2003	2004	2005	2006	2007
Vikerkaar	8,3	8	8	8	9
Pääsupesa	12	12,25	12,25	12,25	10,75
Tareke	5,3	6,25	6,25	6,25	11,25
Tõruke	9,3	9,3	9	10,75	10,5
Päikesejänku	12	10	10	9	9,5

Positions for hobby school teachers

Hobby schools	Year				
	2003	2004	2005	2006	2007
Läänemaa Sports School	10,5	11,8	13	11,5	10,6
Haapsalu Art School	2,7	2,7	3,1	4	4
Haapsalu Children Centre	8,83	8,25	9	8	10,2
Haapsalu Music School	25	27,3	26,5	23,61	23,5

Youth work

Youth hobby schools	4
Participation	900
Youth organisations	4
Membership	310
Open youth centres	2
Youth collectives	7
Membership	259

Sport

Sport clubs	24
Among them for the youth	21
Participation	1320
Sports halls	2
Stadiums	1
Indoor pools	1
Yacht clubs	1
Tennis courts	5

Sport

Shooting ranges	1
Fitness centres	10
Football pitches	1
Basketball courts	6
Centres for extreme sport	2
Children playgrounds (Among them kindergartens)	12

Culture

Theatre halls	1
number of seats	565
Museums	7
Galleries	6
Public libraries	1
Congregations	8

Bigger culture events

The White Lady Days and the open- air performance
Haapsalu Old Music Festival
Festival for string instruments „Viulimängud“
Haapsalu Horror and Fantasy Film Festival
August Blues
Culture Catapults
Hot Glass Symposium
American Beauty Car Show

Tourism

Number of visitors at Haapsalu Tourist Info
Centre in 2007 21 100

Foreigners	74%
Accommodation facilities	28
Hotels	5
with bed space	554
Accommodation space total	885

Main places of sightseeing:

Haapsalu Episcopal Castle
 Haapsalu Old Town
 Haapsalu Railway Station
 Läänemaa Museum and Ilon's Wonderland
 Haapsalu Kursaal
 Promenade
 Tchaikovsky Memorial Bench
 Paralepa park-forest
 Museum of Coastal Swedes

Entrepreneurship

Individual entrepreneurs	470
Entrepreneurs registered in the register of companies	582
Government and state institutions	27

The third sector

Foundations	9
Non-profit associations	280

Commerce and catering

Shops for industrial goods	109
Groceries	4
Shops for mixed goods	14
Catering enterprises	37

Employment

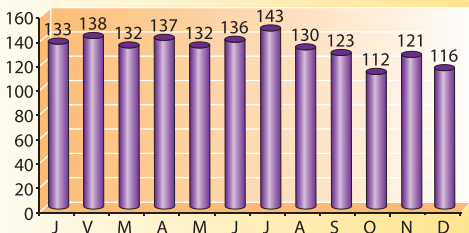
Average gross earnings
per month (in kroons)
per one taxpayer

2005	7639
2006	8932
2007	10924

Average number of tax
payers per year

2005	5345
2006	5447
2007	5502

Job seekers (1 January 2008)



Free workplaces on 1 January 2008

108

Institutions and enterprises with the biggest number of employees

OÜ PVMP-EX	232
AS HEAL	198
SA LÄÄNEMAA HAIGLA	198
HAAPSALU TARBIJATE ÜHISTU	155
AS HAAPSALU KUURORT	133
AS HAAPSALU UKSETEHAS	133

SA HAAPSALU NEUROLOOGILINE

REHABILITATSIOONIKESKUS

129

OÜ AARDEMAA

122

HAAPSALU GÜMNAASIUM

112

LÄÄNE MAAVALITSUS

110

Land use of the town (ha)

The state of land ownership in the town territory:

State-owned

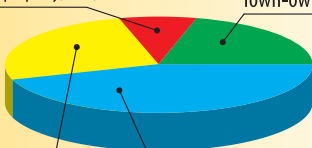
(registered property) 107,7

Town-owned 225,3

Private

property 278,8

State-owned (non-registered property); 450,4



Purpose-targeted land use::

Swampy, brushy areas and reed beds: 333,7

Water bodies: 16,9

Protection areas: 4,3

State defence areas: 7,7

Streets, roads: 71,5

Parks and green areas: 265,6

Reserve land: 25,2

Land of block of flats: 2,4

Small house land: 164,2

Areas of public building: 31

Production areas: 60

Business areas: 45,4

Paralepa recreation area: 30,1



Housing Construction in 2007

Real estate	2376
Dwelling houses in exploitation	15
With living quarters	117
Useful space (m ²)	9646,8
Issued building permits	65
Initiated detailed planning	18

Transport

Registered vehicles

Cars	5975
Lorries	1155
Buses	42
Motorcycles	150
Trailers	450

Bus routes

Bus routes	3
Bus stops	64
With bus shelters	6

Traffic accidents

With casualties	19
Caused by drunk drivers	3
Death caused by accidents	-
Injured	21

The budget of Haapsalu

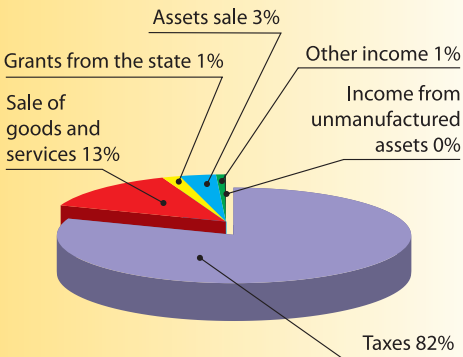
Outturn of the town budget

(in thousand kroons)

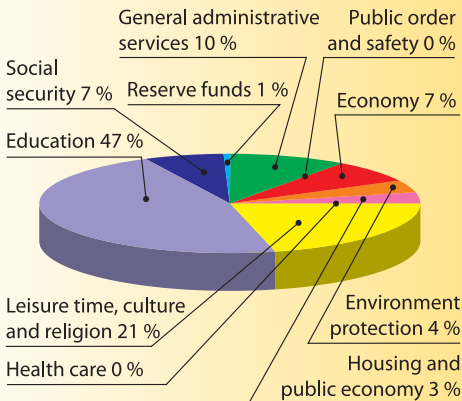
Year	Return	Expenses	Financial business
2007	177105	179100	1995
2006	150818	170324	19506
2005	129829	135998	6169
2004	132528	135670	3142

Haapsalu town revenues for 2008

Structure of the incomes of the budget of 2008 of Haapsalu Town



Distribution of the expenses of the budget of 2008 of Haapsalu Town



Haapsalu Town Council

Membership of 5th Haapsalu Town Council

Fraction	Number of members
Res Publica	5
Pro Patria Union	4
Estonian Centre Party	3
Estonian Reform Party	8
Run for Town Council in the list of Estonian Centre Party	1

Haapsalu Town Government

Government members	5
Departments	7
White-collar workers	47
Employees	1

Haapsalu Town Government has founded:

Foundation Läänemaa Haigla

Foundation Haapsalu Episcopal Castle

Foundation Fund of Haapsalu Castle Fond

Haapsalu Town Government is a shareholder or owner of:

S/c Haapsalu Waterworks

S/c Haapsalu Town Maintenance

S/c Haapsalu Sport Facilities

S/c North-West Estonian Centre of Waste Treatment

Haapsalu town-owned enterprises:

Kindergarten Tõruke

Kindergarten Vikerkaar

Kindergarten Pääsupesa

Kindergarten Päikesejänku

Kindergarten Tareke

Haapsalu Gymnasium

Haapsalu Primary School

Haapsalu Co-educational Gymnasium

Haapsalu Wiedemann's Gymnasium

Haapsalu town-owned enterprises:

Haapsalu Gymnasium for Adult Learners

Haapsalu Music School

Haapsalu Art School

Haapsalu Children's Centre

Läänemaa Sport School

Central Library of Lääne County

Haapsalu Culture Centre

Haapsalu Social Centre

Railway Museum

Haapsalu Town Government

Posti 34, 90504, Haapsalu

Phone: +372 472 5300

Fax: +372 472 5310

www.haapsalu.ee